



Project Management Institute® Honolulu, Hawaii

Aloha,

Your PMI Honolulu, Hawaii Chapter's 2021 2nd Quarter newsletter includes our Chapter President's message, awarding Youth, introducing your latest Publicity Director volunteer, upcoming events information, and more!

This newsletter is for you, if you have ideas/topics for future newsletters, or have general questions about our newsletters, please reach out to publicity@pmihnl.org. Mahalo!

Message from the President



Aloha PMI Honolulu Hawaii Chapter Members,

The year is 2021 and we have been dealing with COVID-19 on a mass scale for well over a year now. Companies have transitioned their workforce to remote/virtual and hybrid working arrangements. The state has migrated to Tier 3 earlier this year and there seems to be better days ahead as efforts towards mass vaccination and herd immunity are under way.

I wanted to take a moment to thank the current board for their efforts to think creatively to put on events, programs in a virtual setting that is safe for

everyone. We put on our first virtual Professional Development Day and Annual Dinner in 2020 and it was well received. We were able to preserve opportunities for Professional Development Units (PDUs) and networking with the membership base.

To the PM community, you have done great at being respectful of the Federal and State guidelines set forth for us, and also of your company's guidelines.

The Board of PMI Honolulu, Hawaii Chapter will continue to monitor COVID-19 guidelines very carefully and are being deliberate on which events we transition back to in person attendance for the latter part of this year. We have exciting collaborations in planning with sponsors, educational partners and the business community in hopes of delivering interesting programs and events to you. Stay tuned.

We do have a large membership base of over 750 and if you have any concerns or recommendations, please directly send me a note at president@pmihnl.org.

Mahalo and be safe,

Aloha,

Ben Yuan, PMP

PMI Honolulu, Hawaii Chapter President 2021

Your New/Old Publicity Director



Edward (Ed) Tsang reprised his role as the chapter's Publicity Director as of May 2021, he held this role during 2012-2014. During that time, Ed established the PMI

Honolulu and 'Olelo Community Media partnership, established the chapter's video production group, expanded chapter's social media presence, had both the Mayor of Honolulu and Governor of Hawai'i to declare Proclamations for the annual Professional Development Day(PDD), and is the photographer/videographer for the PMI Region 7 Leadership conferences.

Professionally, Ed held roles in Systems Engineering, New Business Development, and Senior Project Management for major firms as IBM Corporation, Lockheed Martin, BAE Systems, and CACI. His projects deal with complex mission-critical weapon systems, unmanned aerial vehicle integration, state-of-the-art sensors, mail handling automation, business process improvement, web-based financial reporting, wireless infrastructure and IT modernization. Ed's broad background covers concept to award; design, development and test; field engineering support, training, and technical documentation. Clients include the US Navy, US Marines, US Air Force, United States Postal Service, State of Hawai'i, Vancouver Airport Authority, and Commercial clients.

Ed earned his Bachelor of Science in Electrical Engineering from the NYU Tandon School of Engineering (formerly Polytechnic Institute of NY) and, since 2005, is a certified Project Management Professional (PMP). In October 2019, 'Olelo Community Media recognized him as "Volunteer of the Year." In addition to freelance projects, Ed is the television production set photographer at 'Olelo. Ed is married to the love of his life, Colleen, and is a father to two children (okay, they're adults) and a grandfather of three wonderful grandchildren (aren't they all?).

ANNOUNCEMENT: NOVEMBER ELECTIONS!

PMI Honolulu Hawaii Chapter's 2022 Board of Directors election is coming up in October of this year. Is being a Board Member of a nonprofit organization your next challenge? Start checking out the vacant positions and think about the position that best suits you.

Below are the list of vacancies coming up for the 2022 election.
See <http://www.pmihnl.org> for board position description.

2022 Vacancies:

- Vice President 2021 / President Elect 2022 (1 year/1 year, voting member)
- Finance Director (2 year term, voting member)
- Professional Development (2 year term, voting member)
- Program Director (2 year term, voting member)
- Publicity Director (2 year term, voting member)

Election Timeline:

- September 1 - 20: Call for Nominations
- October 16 - 30: Elections
- November 12: Installation of 2022 BOD during the PMI Annual Dinner

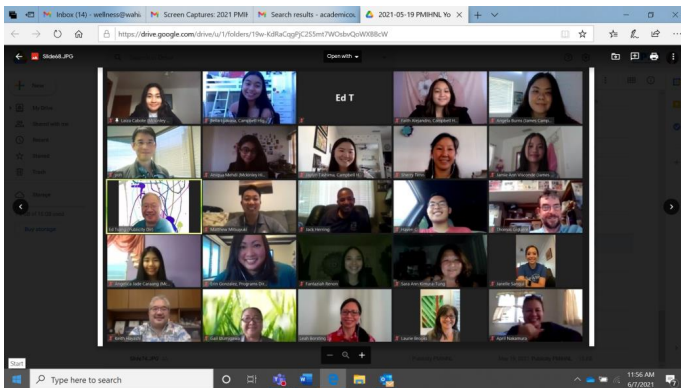
Benefits of Serving on the Board:

- Gain invaluable leadership experience as a Board member
- Expand your professional network in the PMI community
- Give back to the profession
- Earn PDUs through volunteer hours
- Complimentary or reduced price to the Chapter's Annual Professional Development Day Conference
- Complimentary or reduced price to PMI Honolulu Chapter meetings
- If possible, attend the PMI Region 7 or North America Leadership Conference
- Access to PMI.org Leadership resources

Interested in learning more about any of the upcoming Board Positions, reach out to our Past President, **Yoh Kawanami**, at PastPresident@pmihnl.org

YOUTH AWARDS!

Our Chapter's 2nd Annual Project Management Youth Awards.



Students in our Hawaii schools are doing some amazing work that impacts their schools and communities. As schools incorporate project based learning and

leverage projects for student classroom learning and school activity planning, project management becomes a valuable tool and skill for students to increase their project's success while building career readiness skills. PMI Honolulu recognizes the value of project management and connection between the profession and academic environments. Thus, the annual youth awards allow us to bring professionals and students together to make those project management connections.

This year, PMI Honolulu held its 2nd Annual PMI Honolulu Youth Awards, which is opened to all Hawaii high school students that have projects in the designated school year. The awards include:

Youth Project of the Year recognizes youth on the components and management of the project.

Youth Project Team of the Year recognizes youth on the dynamics and cohesiveness of the project's team.

The purpose of the PMI Honolulu Youth Awards is to:

- **Recognize** students for application of project management concepts, tools, and strategies.
- **Connect** students to the project management profession and Hawaii professionals.
- **Encourage** the study and application of project management concepts and tools by students and educators in Hawaii high schools.
- **Showcase** student projects with Hawaii project managers.

“It is an honor for PMI Honolulu, Hawaii chapter to host the Youth Awards where we get to see highly decorated students focused on different industries. We are excited for their future and we wish them well in their future projects that they will lead.”, **Yoh Kawanami**, PMI Honolulu *Past President*. Every year, the student projects provide impactful scopes and lessons around how they managed their schedules and overcome challenges within their teams. Past Presidents like Yoh Kawanami are invited to participate as our youth award judges. Past President Kawakami further shares how “at such an early stage, all the students understand the importance of communication and teamwork, we are very excited to see what the future brings for the high achieving students.” Keeping our past presidents, current board of directors, and members connected to the youth within our communities provides a real way to engage, connect, and grow the project management profession. As a judge, Kawanami gets to experience first-hand how “amazing [it is] to see the detail-oriented project teams with such passion on their topics.”

Being able to impact our students and be part of the development of our future team members and colleagues already equipped with project experience and skills.

Congratulations to our 2021 PMI Youth Award Winners!

Youth Project of the Year

1st Place: Malama Mental Health, **McKinley High School**

2nd Place: Sabers' Pause for Paws!, **James Campbell High School**

Youth Project Team of the Year

1st Place: Malama Mental Health, **McKinley High School**

2nd Place: Environmental Remediation Effects of a Grattix Tote, **Waipahu High School**

3rd Place: Sabers' Pause for Paws!, **James Campbell High School**

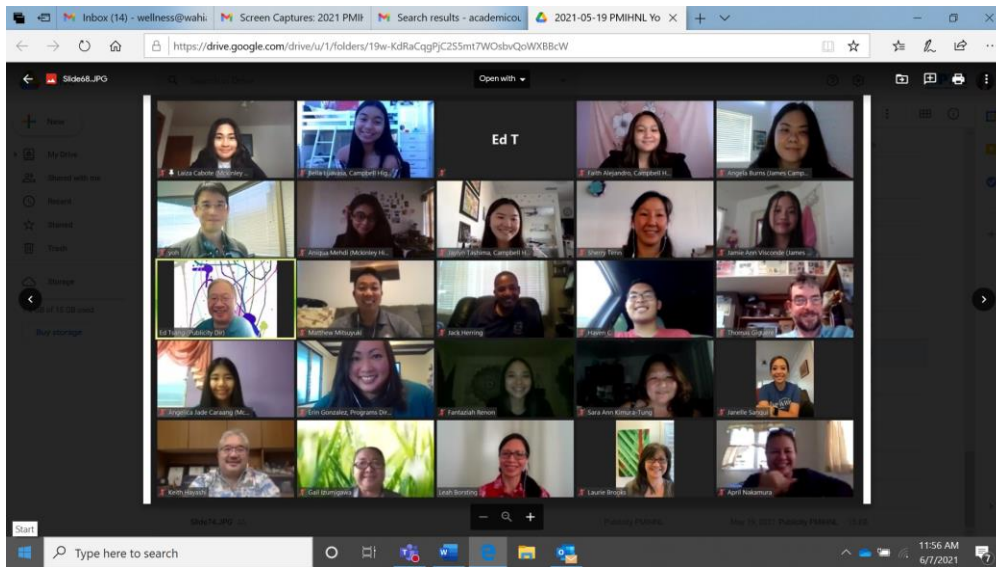
People's Choice Award

Voted by the event attendees, the award went to **Malama Mental Health**.

Visit pmihnl.org/youthgen to see what other impacts we are making with our youth!

Mahalo nui to our Past Presidents whom served as judges, to Special Projects and Academic Outreach for coordinating the awards, to our members that attended the event, and to all the project teams and their advisors whom applied for the award!

Be on the lookout for next year's PMI Honolulu Youth Awards! If you or anyone you know is interested in learning about incorporating project management into school projects, contact our Director of Academic Outreach, **Joslyn Sato** at AcademicOutreach@pmihnl.org.



Preparing Our Youth for the Future: PMI PM Ready Certification

By Dr. Joslyn Sato, DM, PMP, PMI-Honolulu Director of Academic Outreach



Over the past few years, Project Management Institute (PMI) Honolulu has been increasing its outreach and focus on our future, our Hawai'i youth. Through collaborations with various schools and youth programs we were able to start incorporating project management concepts, tools, and strategies to not only increase project success but also to build career readiness skills. In addition, our **Annual Youth Awards** allows us to connect our youth to the profession by recognizing their projects and project teams.

During the first quarter of 2021, through our Academic Outreach services we were able to impact over 100 individuals (teachers, staff, and youth) through education about project management for school projects, guest judges for school projects,

collaboration on classroom and program integration, and sharing about PMI's recently launched PMI Project Management Ready Certification.

The **PMI Project Management Ready Certification** allows us to equip our youth with a certification as they enter their professional journey post-high school. Teachers can incorporate PMI PM Ready modules into their current curriculum to introduce project management fundamentals and core concepts, traditional plan-based methodologies, agile frameworks / methodologies, and business analyst frameworks. Through PMI PM Ready "Learn, Practice, Certify" model, schools are able to build student knowledge towards a certification while in high school.

The PMI Project Management Ready Certification is delivered through Certiport. During March, Certiport held a Month of PMI that focused on PMI's newest certification for youth. I was invited to be their key speaker on "Why Teach Project Management?". As a parent to a high school and middle school student, and through my experience in working with schools and students as PMI Honolulu's Director of Academic Outreach, I have a passion of empowering our youth with the skills we use in our profession. By educating our keiki and allowing them to apply project management concepts, strategies, and tools in their school projects it allows them to lead successful school projects while building experience towards career readiness. In addition, as schools leverage projects and Project Based Learning (PBL) to teach our students, project management helps to complement and enhance the learning experience. And as we know, no matter where you go, chances are you will be supporting or leading a project! By taking the next step to incorporate a professional certification into our schools, we give our keiki and our youth an added value to opportunities and to a network of professionals through PMI and our PMI Honolulu Chapter.

If you have any contacts or interests in Hawaii's schools and would like to learn more about the PMI Project Management Ready Certification or other opportunities for integrating project management into the classroom and with PBL, contact me at AcademicOutreach@PMIHNL.org

2021 PMI Honolulu College Scholarship Program



2021 PMI Honolulu Scholarship Continues to Seek Applicants

This scholarship is open to any full-time student enrolled in any level of academic study in the state of Hawaii interested in obtaining PMI credential(s) and becoming more involved in the project management community. While physical presence is not required, award winners will need to be able to commit at least 20 hours of time to support PMI Honolulu chapter activities and projects over the course of 2021-2022.

Please consider the following before applying:

- Why are you're interested in this scholarship program
- Your willingness and commitment to continue to volunteer with PMI Honolulu
- Your project management goals
- Your own capacity and interest to volunteer at least 20 hours during 2021 with the PMI Honolulu chapter
- 2 Individuals that would recommend you for this scholarship program
- Proof of full-time academic status

To apply [click here](#)

Applicants are being reviewed and will be notified if they qualify within 30 days of application.

Should you have any questions, please contact College Relations Director **Jamie Champagne**, collegerelations@pmihnl.org.

More information and FAQ can be found here: <https://www.pmihnl.org/nextgen-news>

Save the Date!



Friday, November 12, 2021, for Professional Development Day (PDD)

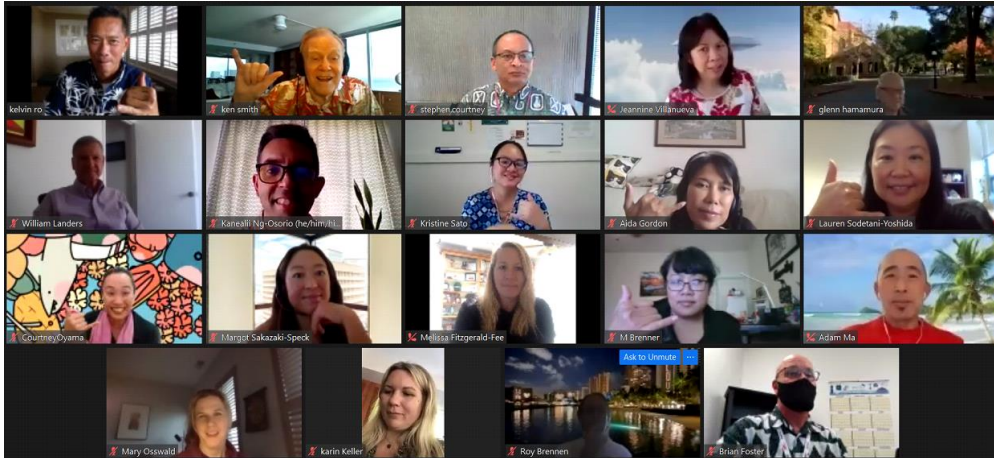
PMI Honolulu is preparing for another exciting PDD and we look forward to your participation in this year's event. There are many more details to work out, and right now we are keeping the venue options open. But we are excited and hopeful to be thinking about the possibility of an in-person event. The venue is not for certain yet, so we will keep you updated throughout the year. But the good news is we have set a date!

PMI Honolulu Chapter's Programs Director, **Erin Gonzales**, "We are experimenting with a new concept and will be merging our Annual Dinner Meeting activities as part of this year's Professional Development Day (PDD). Therefore, please expect to see the following included as part of PDD: President's remarks, project of the year and project manager of the year awards, and volunteer recognition. Mahalo!"

Please save **Friday, November 12th, 2021** for PDD and Annual Dinner so you are available and ready to participate in this incredible event.

For more information, contact **Brandon Ancheta** at specialprojects@pmihnl.org

Membership Update



It's hard to believe that it's been a year since the COVID pandemic changed our lives and operating model for the PMI Honolulu Chapter. Shifting to a virtual platform for the Breakfast Roundtables and Lunch meetings has helped us stay connected through these unique times. We hope that you've taken the opportunity to join these sessions and earn free PDUs! We also wanted to take a moment to share a slight change: starting in April 2021 please note that there will be a nominal cost of \$10 for non-PMI HNL members to attend the virtual Breakfast Roundtables and Luncheons. We will continue to offer these events FREE for PMI HNL members, as part of your membership benefits.

If your chapter membership has expired and you're not set up for auto renewal, here is some information that will help.

Auto renewal for PMI global is separate from local chapter. [Click here for How-To set up auto renewal.](#)

If this an oversight, we encourage you to renew today! Keep your membership to enjoy chapter benefits such as volunteer and job opportunities below.

Here's a link for your convenience: <https://my.pmi.org/>

Login and access your dashboard then select renew membership.

Be sure to check out the automatic renewal option for both your global and chapter membership to keep your membership active with minimal effort and skip these reminders!

The new eCommerce site recently implemented may not include your chapter membership so be sure to add Honolulu, Hawaii chapter to your cart when renewing.

We are looking forward to resuming in-person events when the timing is right. In the meantime, please continue to stay connected and join us for virtual events. Take care, and please stay safe and well!

For more information, contact membership@pmihnl.org.



Upcoming events

Sunday July 4, 2021

Olelo PM Broadcast: 2020 PDD:
Sherry Menor-McNamara –
Moving Forward with Hope and
Optimism

[Learn more >>](#)

Wednesday July 21, 2021

Virtual Luncheon | Jag
Nagendra | Emotional
Intelligence for Project
Managers

[Learn more >>](#)

Sunday August 1, 2021

Olelo PM Broadcast: 2020 PDD:
Ray Ju – Collaborate to
Innovate Through Lean
Construction

[Learn more >>](#)

Sunday September 5, 2021

Olelo PM Broadcast: 2020 PDD
(Strategic Bus. Mgmt): Vincent
Mirabelli – Overcoming Bias for
Better Decision Making (9/5/21
– 9/26/21)

[Learn more >>](#)



To read on our blog



01 JULY 2021

2021 PMI Honolulu Project Manager of the Year & Project of the Year Nominations

[Learn more >>](#)



13 APRIL 2021

PMI Honolulu Member Kenneth Smith's article gets published in PM World Journal April 2021 Issue

[Learn more >>](#)



Available job offers



11021falsefalse

Senior Project Manager

Company: [Global Technology Solutions Provider](#)

Location: [Honolulu, HI](#)

[Learn more >>](#)



10545falsefalse

Volunteer - Finance Auditor

Company: [PMI Honolulu Chapter](#)

Location: [Honolulu, HI](#)

[Learn more >>](#)

Meet Our Strategic Partner:
‘OLELO COMMUNITY MEDIA (www.olelo.org)



If you've seen any of the dozens "PMI Honolulu Presents" videos, they were made possible through a partnership with Olelo Community Media. Their mission is "To strengthen our island voices and advance community engagement through innovative media." PMI Honolulu volunteers received training from Olelo to produce video programs, operate professional grade video equipment, edit videos at their workstations, and occasionally record presentations/talks at their television studios.



Olelo programming is available on cablecast television channels and online streaming, the content varies from culture, free speech, education, to public town hall meetings. In 2013, PMI Honolulu introduced project management content to expand the Olelo programming repertoire. As a partner, PMI Honolulu delivers in-person "project management 101" training to their staff as well as allow designated staff to attend the Professional Development Day sessions. Our organizations mutually benefitted in learn each other's craft, discipline, and professionalism. The video, <https://www.youtube.com/watch?v=ZsYvLkGI0I>, presents an overview of

Olelo Community Media, with PMI Honolulu Publicity Director **Ed Tsang** offering testimony to the value video brings.



Mahalo to our Sponsors!



KAMEHAMEHA SCHOOLS®



UNIVERSITY
of HAWAII
MĀNOA
OUTREACH COLLEGE



Placing great people in great jobs

Interested in Sponsoring?



Follow us:   

PMI Honolulu, Hawaii Chapter 1050 Bishop Street, Suite 138 Honolulu, HI 96813

[Unsubscribe from this list](#) - [Remove me from all communication](#)