

# PMI Honolulu Hawaii Chapter



*Exam Prep Class Spring 2015 – What an Amazing Group!*

## Providing Value

### Thoughts and takeaways of attending a Region 7 Summit

I had the good fortune to be able to attend a Region 7 PMI event. The PMI Honolulu Hawaii Chapter is lucky to be part of a region that includes California, Nevada, Arizona, and New Mexico. I spent three days with over 60 other chapter members from the region listening to presentations, sharing lessons learned, talking story and laughing (and yes, complaining) of the challenges with supporting our PMI local chapters. I came back so excited and energized to do my part for the chapter that I wanted to ensure some of the key takeaways were not only communicated with our board but also with the entire chapter. Here are some of those thoughts:

#### 1. Consider what **MEMBER VALUE** you are delivering in ALL you do

For every action or decision made by a board of directors of a PMI chapter, the question should be asked of what VALUE we are delivering to members. Members join to get something out of the chapter, whether it's networking, possible employment, professional growth, community service or simply to

## IN THIS ISSUE

*Providing Value - Region 7 Summit 1-2*

*What does the "CCR Update" mean to me? 3-4*

*The Laulima Tech Challenge 5-6*

### Membership Corner

*Social Media for PMI Honolulu Hawaii Chapter 7-8*

*New Members, New PMPs 9-10*

*Chapter Values 11*

*2015 Events Calendar 12*



maintain credentials – every member or potential member is looking for something. I'd love for every member to consider two things:

- What value are you getting out of being a PMI Honolulu Hawaii Chapter member?
- What value are you sharing with other members of the chapter?

With these thoughts always top of mind, we can together build a successful and engaging organization!

## 2. PMI Chapters are **ENTIRELY VOLUNTEER** organizations

Sitting in a room with over 60 people and realizing that every one of them is a volunteer, that we are all doing what we're doing for the chapter IN ADDITION TO our work, family and friends. I was blown away by the passion and energy every person brought to the table. All were extremely passionate and desired to help grow the profession in their own communities. As you listened to them talking it was amazing to hear how much they could accomplish in their "spare time"!!

Think about all the events, training, job opportunities and other items you get notified about from PMI Honolulu Hawaii Chapter. Now consider that all of these are setup, run, managed, shared and reported on by your fellow members, fellow volunteers! It's incredible when you find something you're passionate about and put a little energy together with others to build great things!!

These thoughts I bring back to the chapter and the board to encourage us each to seek how to grow and build our organization that not only supports our chapter but builds greater community awareness and support for the project management profession and those that work so hard day in and day out. You can find evidence of this share on the chapter's website ([www.pmihnl.org](http://www.pmihnl.org)) and the social media sites (**Like Us** on **Facebook**, **Follow** us on **Twitter**, **Follow** us on **LinkedIn** or **Join** the **LinkedIn Group** to get in on the Conversations!).

Look forward to getting more involved with all of you!

*~Jamie Champagne*

# PMI Honolulu Hawaii Chapter

## What does the “CCR Update” mean to me?

If you are a PMI credential holder, then you should be aware of the notices that are being sent about “CCR Updates.” CCRs are the Continuing Certification Requirements that credential holders must complete to maintain their credentials in good standing. The idea behind them is to help you grow and develop within the PM profession.



### What is changing?

PMI's goal is to align project management skills with employer needs. Therefore, they are putting a heavier emphasis on Education Requirements. The changes affect the maximum and minimum PDUs you may claim in each of the areas. The biggest changes are the new MINIMUMS on Education Requirements and the new MAXIMUMS on Giving Back Requirements.

### Does this affect me?

If you currently hold a PMI Credential (PMP, PgMP, PfMP, PMI-PBA, PMI-ACP, PMI-RMP, PMI-SP) you are affected in how you capture your PDUs starting on 1 December 2015. You will need to use the new structure of how your PDUs are broken out. However, PMI wanted each person who's in the middle of their 3-year certification period to complete under the old format if they wish. So if your certification expires prior to 30 November 2017, then you do NOT have to meet the new minimums and maximums in each category. All credential holders who renew certifications after 1 December 2017 will all have to then be following the new minimums and maximums.

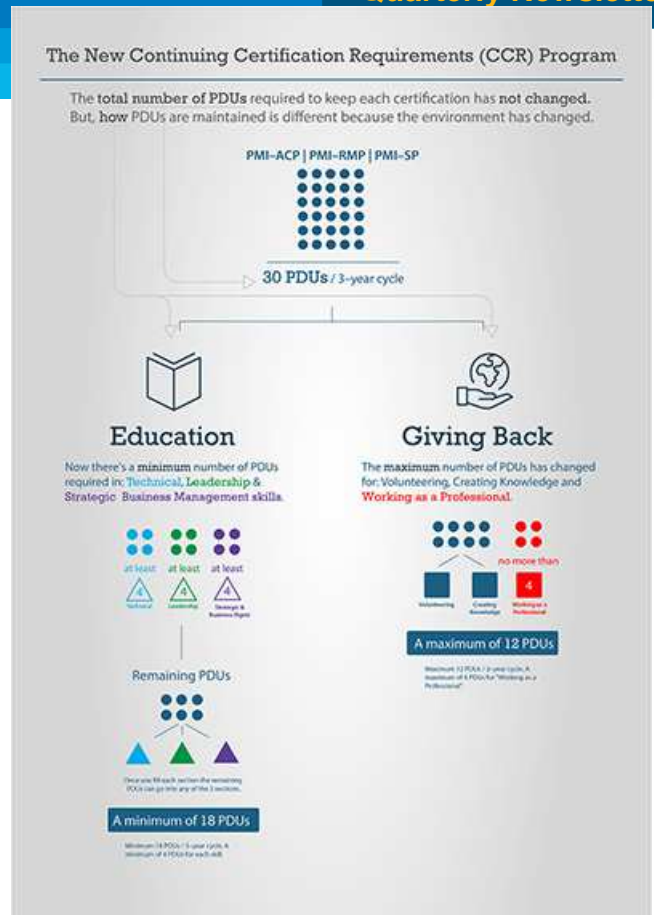
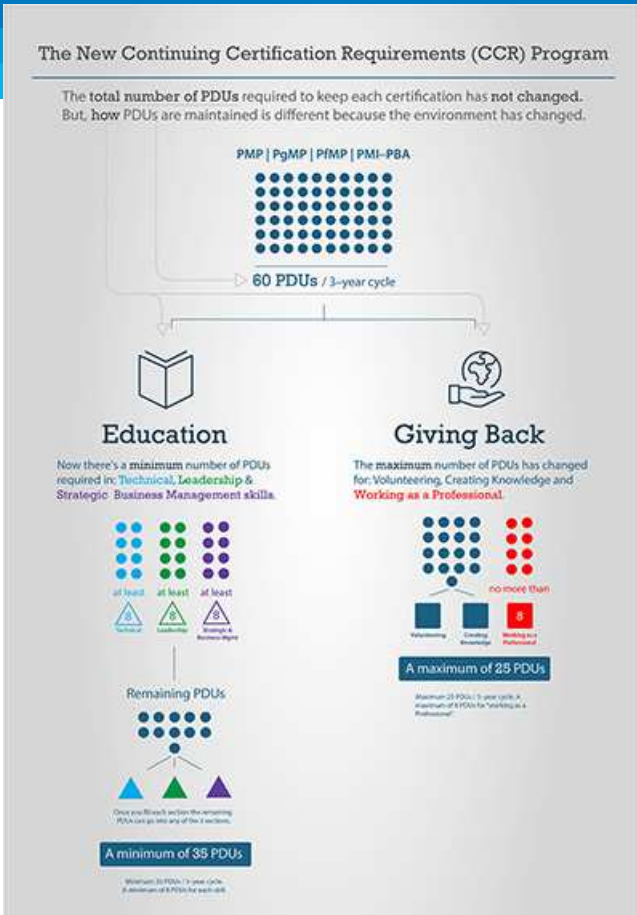
Education Requirements	Minimum number of PDUs required for:	
	PMP, PgMP, PfMP, PMI-PBA	PMI-ACP, PMI-RMP, PMI-SP
Technical Skills	8	4
Leadership Skills	8	4
Strategic and Business Management Skills	8	4
Overall Minimum Number of Education Skills PDUs	35	18

Once you meet the minimum number of PDUs in each skills area, the remaining PDUs needed to meet the overall minimum education requirement can come from any of the three areas.

Giving Back Requirements	Maximum number of PDUs allowed for:	
	PMP, PgMP, PfMP, PMI-PBA	PMI-ACP, PMI-RMP, PMI-SP
Working as a Professional	8	4
Volunteering	*	†
Creating Knowledge	*	†
Overall Maximum Number of Giving Back PDUs	25	12

\*Cannot exceed a total of 25 Giving Back PDUs

†Cannot exceed a total of 12 Giving Back PDUs



### How can I adapt to the changing needs?

The change requires to put a greater focus on what education opportunities you attend or participate in. Did you know PMI Events, such as Monthly Luncheons count for education requirements? Your PMI Honolulu Hawaii Chapter is here to help! Members receive emails on member-only opportunities and offers for training events. Along with all events open to PM practitioners in our community are available at <http://pmihnl.org/>

Beginning 1 December 2015	Certification Expiration Date	
	1 December 2015 – 30 November 2017	1 December 2017 and Beyond
Classify PDUs according to new CCR format.	Yes	Yes
Meet minimum number of PDUs in Education category and each of the three skill areas. This is required for renewal.	No*	Yes
Limit Giving Back category PDUs to new maximum requirement.	No*	Yes

For more information, you can check out [PMI.org/CCR-Info](http://PMI.org/CCR-Info) as well as watch your PMI emails for continued updates as we approach and transition to the new system in December. Feel free to share questions or comments on our LinkedIn Group Discussion board (<https://www.linkedin.com/groups?gid=97799>). Your board members are here to help ask for further clarification and support from PMI so please let us know what thoughts you have!

\* Compliance with the new format is encouraged, but not mandatory to renew during the current cycle. In future cycles, the new CCR program requirements must be satisfied to maintain active certification status.

~Images courtesy of PMI.org.



Please LIKE our 'PMI Honolulu Hawaii Chapter' page on Face Book to follow the latest stories, photos and videos.

# PMI Honolulu Hawaii Chapter



## The Laulima Tech Challenge 2015

### Laulima Tech Challenge

By Jamie Champagne

At this event, small businesses around Oahu will present their business challenges pertaining to technical software solutions and/or social media presence. Students form their development teams and will be matched up with a PMI Mentor. Each team will have the opportunity to engage with these businesses in an effort to develop a viable solution. "<http://laulimatechchallenge2015.challengepost.com/>

Small businesses included Heart Beat Hawaii, Health Mothers Healthy Babies, Frost City, S3 Consulting, and Pr/Pr. The students worked to develop technical solutions and make recommendations on the business plan for future success.

Participants were judged on the Complexity of Business Judges included: Jamie Champagne, Hawaiian Telcom, Neenz Faleafine, Pono Media, LLC., Nicole Velasco, C&C Honolulu Neighborhood Commission Office, Jonas Vibell, Energy Excelerator.

It was a great opportunity to allow students to hear from local businesses about challenges they have today and allow them to get involved to help solve them. Similar to the Design Thinking concepts we utilize here at Hawaiian Telcom, the students had roughly 30 hours to come up with business plans, proposals, presentation and actual working software/prototypes. The solutions ranged from mobile apps to recommendations on re-branding the social image of the organization. One group even solved a software bug that had been existing on the company's website for some time! It's amazing to see what the students come up with in a short amount of time as I try to figure out how to apply the same principles to how we work in business today!





# PMI Honolulu Hawaii is Getting Social!

There's lots going on with the Chapter and ways to be involved, network and earn PDUs. The chapter is trying to make it easy to find information online and stay connected.

**WEBSITE:** <http://pmihnl.org>

We've made some updates to help you get involved, stay in the know and continue your development.

*Updated Main Menu to **Get Involved** and **stay in the know!***

## Main Menu


▫ Home	
▫ Events	← click to see what's happening!
▫ Get Involved	← The many ways to engage with PMIHNL! (membership, volunteering, speaker, employers, sponsors)
▫ Annual Schedule	← Master calendar of chapter activities
▫ Publications	← Read articles submitted by your fellow members
▫ Professional Development	← About Professional Development opportunities for YOU from PMP Exam Prep to PDUs to giving back to the PM community
▫ About Us	← About the chapter, officers, and chapter governance
▫ Contacts	←


*Check out the **Resources** to keep you knowledgeable!*

## Resources

▫ Professional Development Days	← About Professional Development through PMIHNL
▫ PMP Exam Prep Training	← Check out the courses and register
▫ Join PMI Today!	← Become a member!
▫ For Members	← Information and Special offers
▫ Quick Membership Renewal	← Self explanatory
▫ Links	← Mailing list for non-pmi members

# PMI Honolulu Hawaii Chapter


 **TIP!** To now when new events are posted, you can always add an RSS feed to your own website

or MS Outlook - Look for RSS feed icon:  to copy the URL


**FACEBOOK:** **LIKE** our Facebook Page at **PMI Honolulu Hawaii Chapter**  
(<https://www.facebook.com/pages/PMI-Honolulu-Hawaii-Chapter/133241093425318> )

Here you can find pictures from events, see what's upcoming and connect with other PM practitioners!  
Don't forget to **LIKE** postings or **COMMENT** with ideas or even **SHARE** on your own timeline!

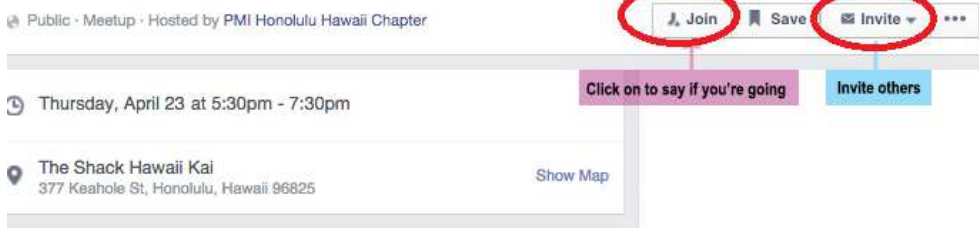
[Like](#) · [Comment](#) · [Share](#)

And **TAG** you and your friends in any picture posted! 



 **TIP!** On Events, click the **JOIN** button to add to your calendar (if setup will show on your mobile devices!).

Also, **INVITE** others to help share the event.



**TWITTER:** @PMIHNL

You can **FOLLOW** us on Twitter to know about events, discussions, and see what others in the PM community are doing!



Follow us on

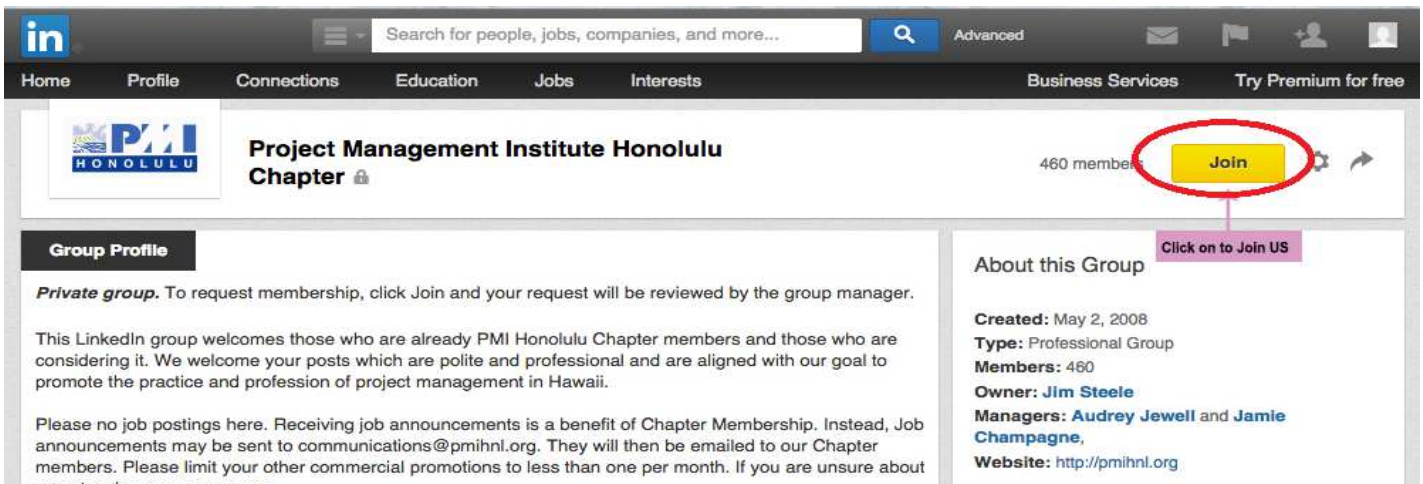
Join LinkedIn



**LINKED IN:** Follow **PMI Honolulu Hawaii Chapter** on LinkedIn for updates, events and PDU Opportunities!



Join in on discussions in the **Project Management Institute Honolulu Chapter Group**



Have more ideas or see other opportunity to connect online? Contact [publicity@pmihnl.org](mailto:publicity@pmihnl.org)



Please LIKE our 'PMI Honolulu Hawaii Chapter' page on Face Book to follow the latest stories, photos and videos.





## Membership Corner

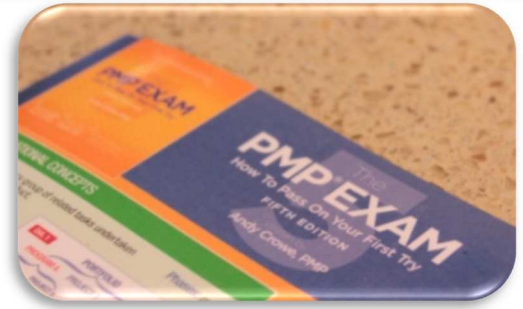
Our membership continues to grow as we aim for our 600th member! Please welcome our new members when you see them at any of our events or even online on Facebook or LinkedIn.

Additionally, our exam prep classes continue to help our community obtain credentials. Make sure you congratulate our newest PMPs on their hard work with such a successful achievement!

You can find out more about our Professional Development opportunities on our website: [pmihnl.org](http://pmihnl.org)

### *New Members (January - March 2015)*

Ada Sonoda	Doug Bush	Leschon Serrano
Alan Arrowsmith	Douglas Holdt	Lydia Mertyris
Alan Nguyen	Elaf Badoghaish	Marcus Mendonca
Andrew Peterson	Elita Kifer	Maria Noriega
Anthony LaSoya	Frank Chan	Matthew Durning
Bhawna Mundotia	James Muller	Michael McCarthy
Bob Souza	Jason Philibotte	Nicholas Tournis
Brian Rambonga	Jeremy Lewis	Noel Gonzales
Carl Miyamoto	John Kump	Paul Uchima
Carolyn Johnson	Jose Guerrero	Ray Hadulco
Carston Feigleson	Joseph Hamel	Richard Onderko
Chad Comunale	Kathleen Pacini	Sandra Iwai
Charles Stableford	Ken Aramaki	Steve Adiazola
Cheryl Kaneshiro	Kevin Hicks	Susan Melchert
Daniel Tousignant	Knikki Roberts	Tami Kerr
Danny Mims	LaTeek Washington	Timothy Lum
Dexton Lybbert	Laurie Brooks	Vanderla Akaka
Donna Block	Lawrence Shaw	Yu Shing Cheng



*New PMPs (January - March 2015)*

Ada Sonoda  
Carolyn Johnson  
Chad Comunale  
Frank Chan  
James Muller  
Jason Philibotte

John Allen  
Leschon Serrano  
Lydia Mertyris  
Michael McCarthy  
Paul Shiraga  
Paul Uchima

Reginald Hooks  
Robert Nievera  
Roy McKinney  
Shelley Izuno  
Steve Adriazola  
Vijay Musaligari

**TEST YOUR PMP KNOWLEDGE**

**Question 1. You are the manager of an aircraft design project. A significant portion of this aircraft will be designed by a subcontracting firm. How will this affect your communications management plan?**

- A. More formal verbal communication will be required.
- B. Performance reports will be more detailed.
- C. More formal written communication will be required.
- D. Official communication channels will significantly increase.



"Check out PMI Honolulu Hawaii LinkedIn Group for answer!

<https://www.linkedin.com/groups?gid=97799> ".

# PMI Honolulu Hawaii Chapter

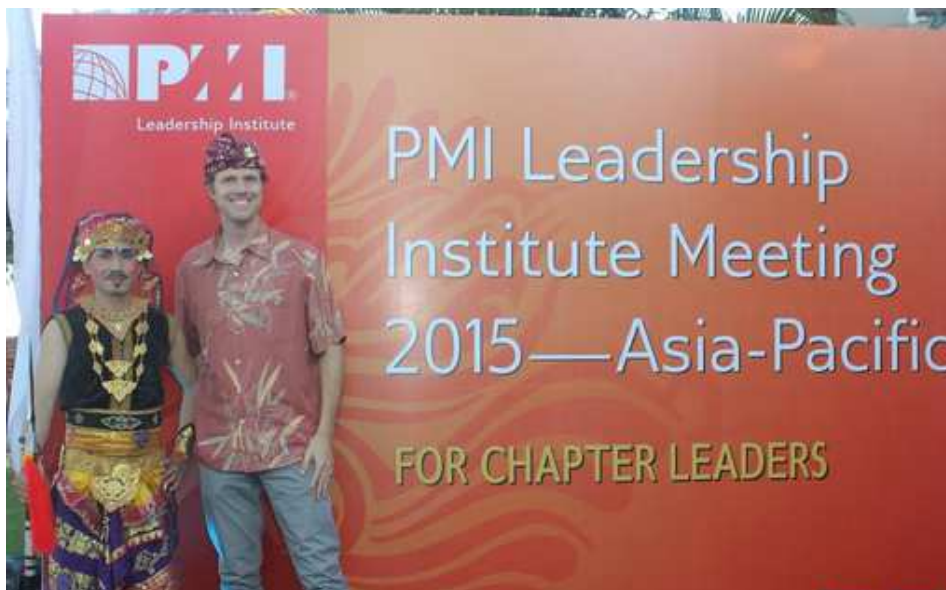
## Our PMI Honolulu Hawai'i Chapter Values:

### VISION

The PMI Honolulu, Hawai'i Chapter will be recognized as an organization of Professional Project Managers dedicated to serving the business and educational communities of Hawai'i through the advancement of Project Management.

### MISSION

The Honolulu Chapter will provide a forum for Project Managers to promote the principles of the Project Management Institute through networking with other project managers, sharing of project experiences, training, education, and certification as a Project Management Professional.

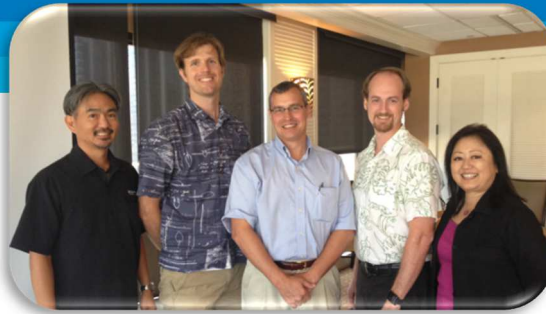


*Tobias Koehler attended the Asia Pacific PMI Leadership Institute Meeting (LIM) in March. There he connected with chapter leaders from chapters throughout the Asia and Pacific region.*

Special thanks to newsletter contributors including Audrey Jewell, Rick Knaggs, Tobias Koehler, Elaf Badoghaish, and Rex Chiu

Earlier newsletter editions are available at our chapter website [www.pmihnl.org](http://www.pmihnl.org)

GOT NEWS or an ARTICLE? For newsletter inquiries, submissions & newsletter volunteering opportunities, please contact Jamie Champagne, Publicity Director, at [publicity@pmihnl.org](mailto:publicity@pmihnl.org)



## 2015 CALENDAR

### 2015 PMP Exam Preparation (Spring, Summer, and Fall classes)

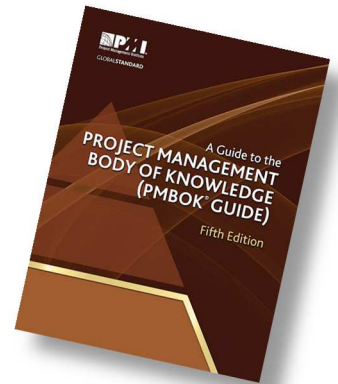
Spring class	Feb 3 - Mar 14
Summer class	Jun 2 - Jul 14
Fall class	Sept 8 - Oct 17

### Monthly Meetings (Luncheons held 3rd Wednesday each month, @ Plaza Club)

May 2015 Luncheon	May 20, 2015
June 2015 Luncheon	June 17, 2015
July 2015 Luncheon	July 15, 2015
August 2015 Luncheon	August 19, 2015

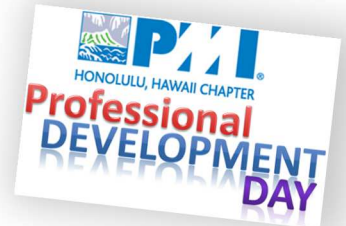
#### Stay Tuned:

- Breakfast Roundtable Meetings @ 2nd Tuesdays ( Jan - Nov 2015 )
- Pau Hana Networking Mixer @ 4th Thursday ( Jan - Oct 2015 )



### Events

**2015 Professional Development Day** **Sept 3, 2015**



## Special thanks to volunteer editors!

**Elaf Badoghaish**, is a masters student at HPU majoring in Informaiton Systems. Being a member of PMI Honolulu Chapter allows her to engage with professional PM, learn from them and build her network. As President of PM Club at HPU, being involved in the chapter and volunteering not only helps her with her education and job, but gives her ideas for the future!



**Rex Chiu**, is a student at Brigham Young University-Hawaii majoring in Business Management, Supply Chain track. He is taking the project management course at BYU-Hawaii and is preparing for the Certified Associate in Project Management (CAPM). He is also involved in several projects on campus and within the Polynesian Culture Center; which will increase his experience to prepare for the Project Management Professional (PMP) exam in the furture.

